



# The Parkland Federation

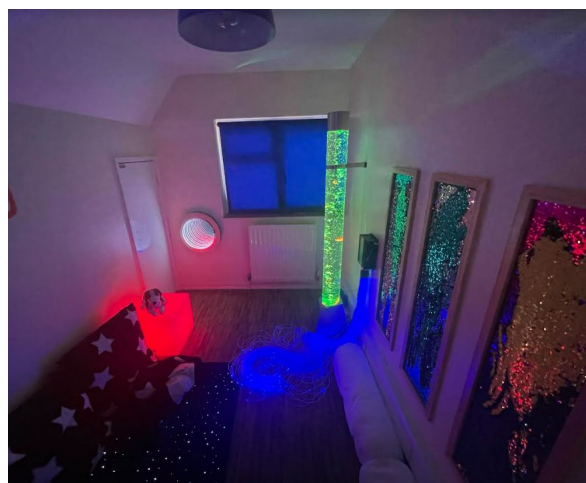
Aim High, Work Hard, Dream Big

## Inclusion Newsletter

Welcome to the final newsletter of the year! What a year it has been! We would like to take this opportunity to thank you for all your support and involvement this year. We hope you have a rested summer and we will see you in September!

### Our Sensory Room

After months of work, The Parkland Federation's Sensory Room is ready for use! This space will provide children with a safe place to regulate their emotions, interact with sensory stimulation and explore their senses. The children can interact with the bubble tube, infinity mirror, sensory tactile boards, fibre light tails and other sensory resources. The SEND Team will create a timetable for use and staff will be trained in how to use it. To view the virtual tour, please [click here](#).



A huge thank you to The John Jackson Trust and The A Lacy Tate Trust for their generous donations.



## Inclusion Newsletter

### Summer Holiday Videos


Your child's new teacher has filmed a tour of their new classroom and other important areas (toilets, pegs etc.). They have also recorded a video of them reading a story. These videos will be available over the summer on Google Classroom and on Tapestry.



### Pupil Passports

All children on the SEND register have helped to develop their own Pupil Passports. These one-page documents ensure that children have a voice in the provision and the support they receive. Teachers and support staff also contribute to ensure that all successful support is detailed. This ensures constituency and an adds an avenue of communication.

*Donald Duck*  
**Pupil Passport**



Likes and dislikes...

I like reading.  
I like football.  
I like counting.

I don't like PE  
I don't like loud noises.  
I don't like assembly.

I would like you to know...

I like playing with my friends.  
I like being outside.  
I like to close the doors.

You can help me by...

Being patient  
Breaking instructions down  
Checking I understand what you are telling me  
Using visuals with spoken instructions

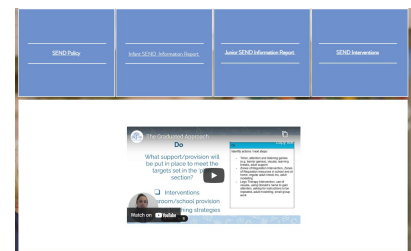
I work best when...

I'm with an adult  
When I'm given learning breaks  
When I am given time to say what I need to  
My work is practical and hands on

### SEND on the Website

As you may have noticed, we now have a SEND page on the website. Here, you will find our SEND Policy and the SEND Information Report. There is also information about the interventions we run and a video on The Graduated Approach.

[Click here](#) to explore!



### Visits in September

We will be inviting identified children in for an extra visit on the 2nd September to see their new teacher and classroom. We will be in touch over the summer if this applies to your child.



# The Parkland Federation

Aim High, Work Hard, Dream Big

## Inclusion Newsletter

### Inclusion Parent Council

In June, we held our second Parent Council meeting. Amongst the valuable input, parents suggested that children who currently access check-ins from a trusted adult could spend some additional time with their new teaching assistant to begin developing a relationship. As a result, as part of our transition activities, identified children have spent time playing games and reading books with their new classroom adults.



### i-go card



i-go is a register and FREE leisure discount card for 0-25's with additional needs living or studying in East Sussex. This could include learning, physical, or social, emotional and mental health needs. A diagnosis isn't always necessary. To find out more, [click here](#).

### Dyslexia Coffee Morning

On the 23rd June, we held a Coffee Morning for parents in our Dahl Studios. Lisa Phillips, from iSEND CLASS, provided parents with an informative introduction on dyslexia. Lisa gave information about how the Local Authority and the school are supporting children with dyslexia and also included some top tips for parents to help their children.

